



Stability and Gait analysis for Lower Limb Prosthetic Users

Research Participants Needed

Are you interested in taking part in a research study?

- Do you wear a below knee prosthesis on one side only?
- Have you been using a prosthesis for more than a year?
- Are you able to walk without aids?
- Are you aged 18 or over?

What you will do in the study :

Walk on the treadmill at your comfortable walking speed. At some point the treadmill speed will change slightly which may affect your steps. We will record your walking using an advanced motion capture system.

What is the purpose of the study?

To learn how people react to small floor movements during walking.

You will not be suitable for this study if

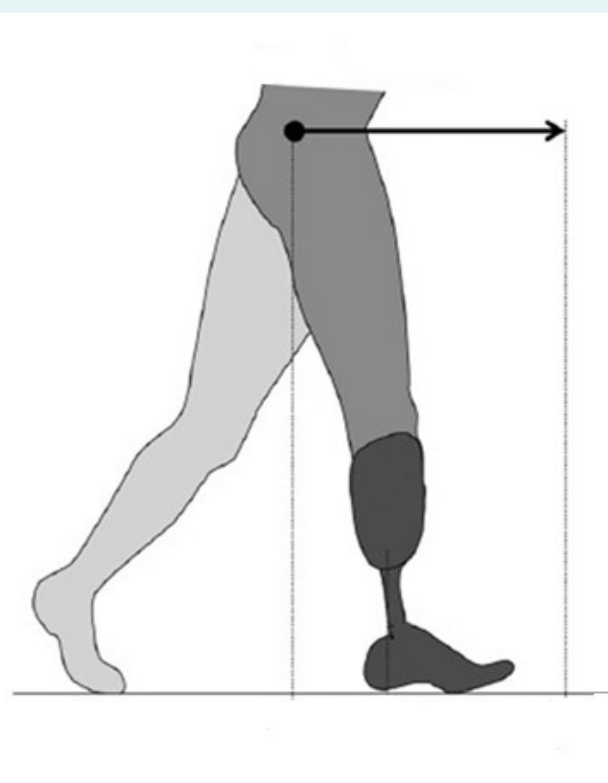
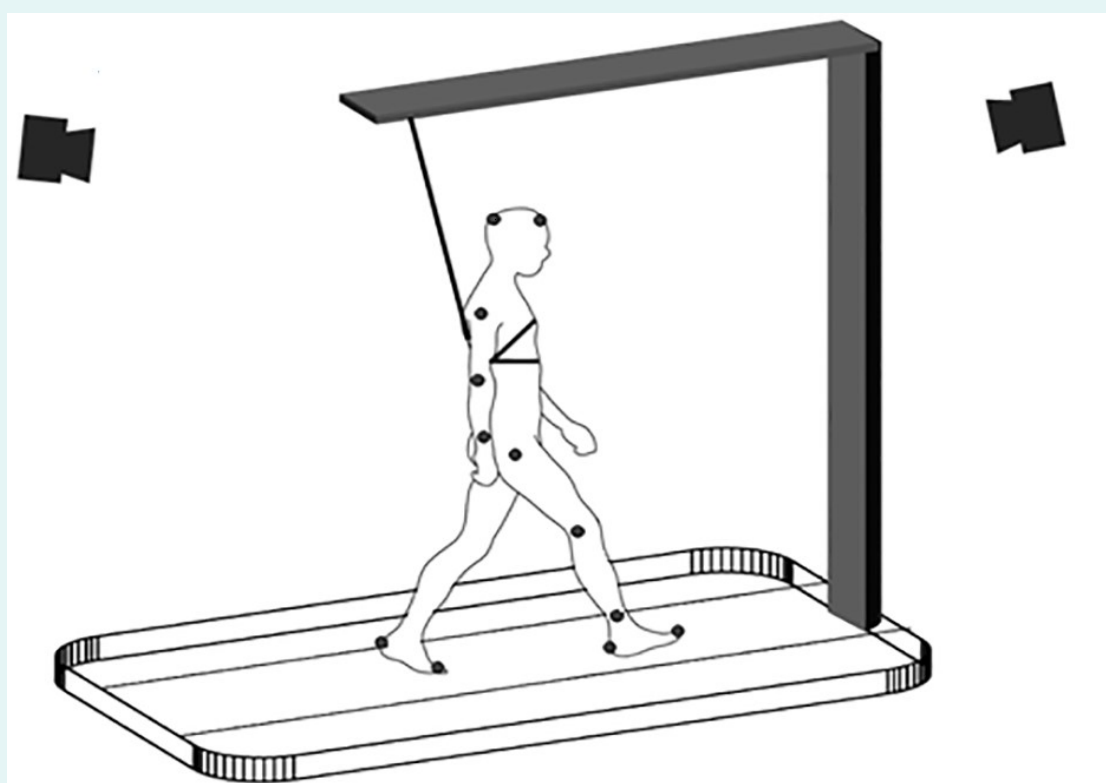
- you are pregnant
- you have other musculoskeletal problems, for example osteoarthritis, chronic back pain, knee instability
- you suffer from motion sickness

Where ?

The University of Strathclyde, Cathedral Street.
Travelling expenses will be reimbursed

How long will it take ?

One visit for no longer than two hours



For further information of how to participate in this study, please contact:

Mr Mahmoud AlFatafta
Postgraduate Research Student

Mobile: 07496341810

Email : Mahmoud.ft@strath.ac.uk